

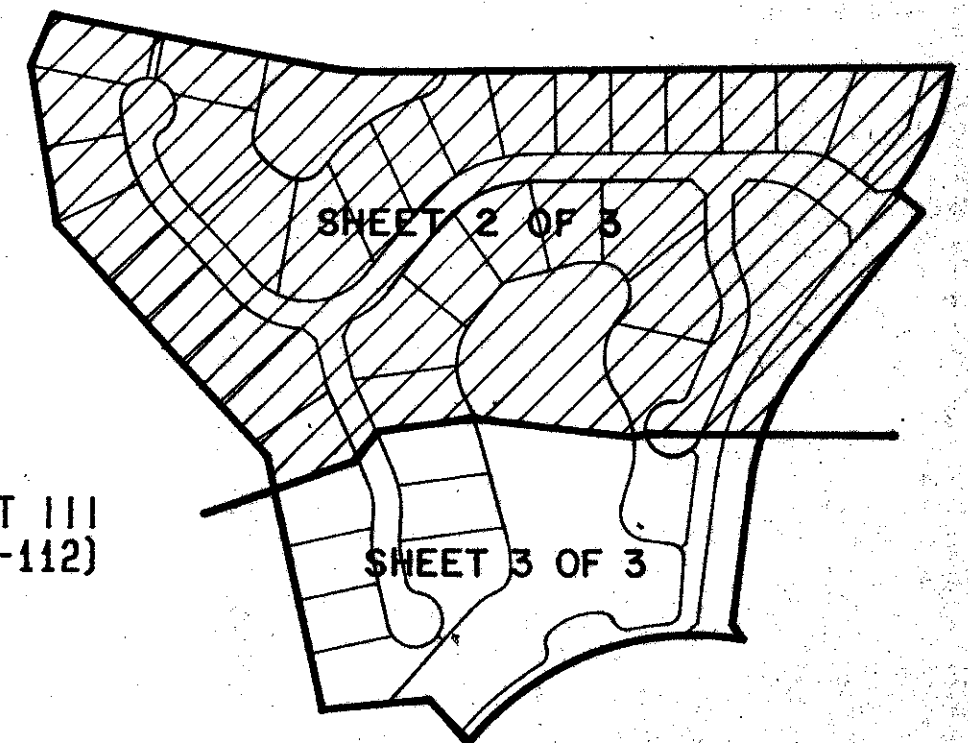
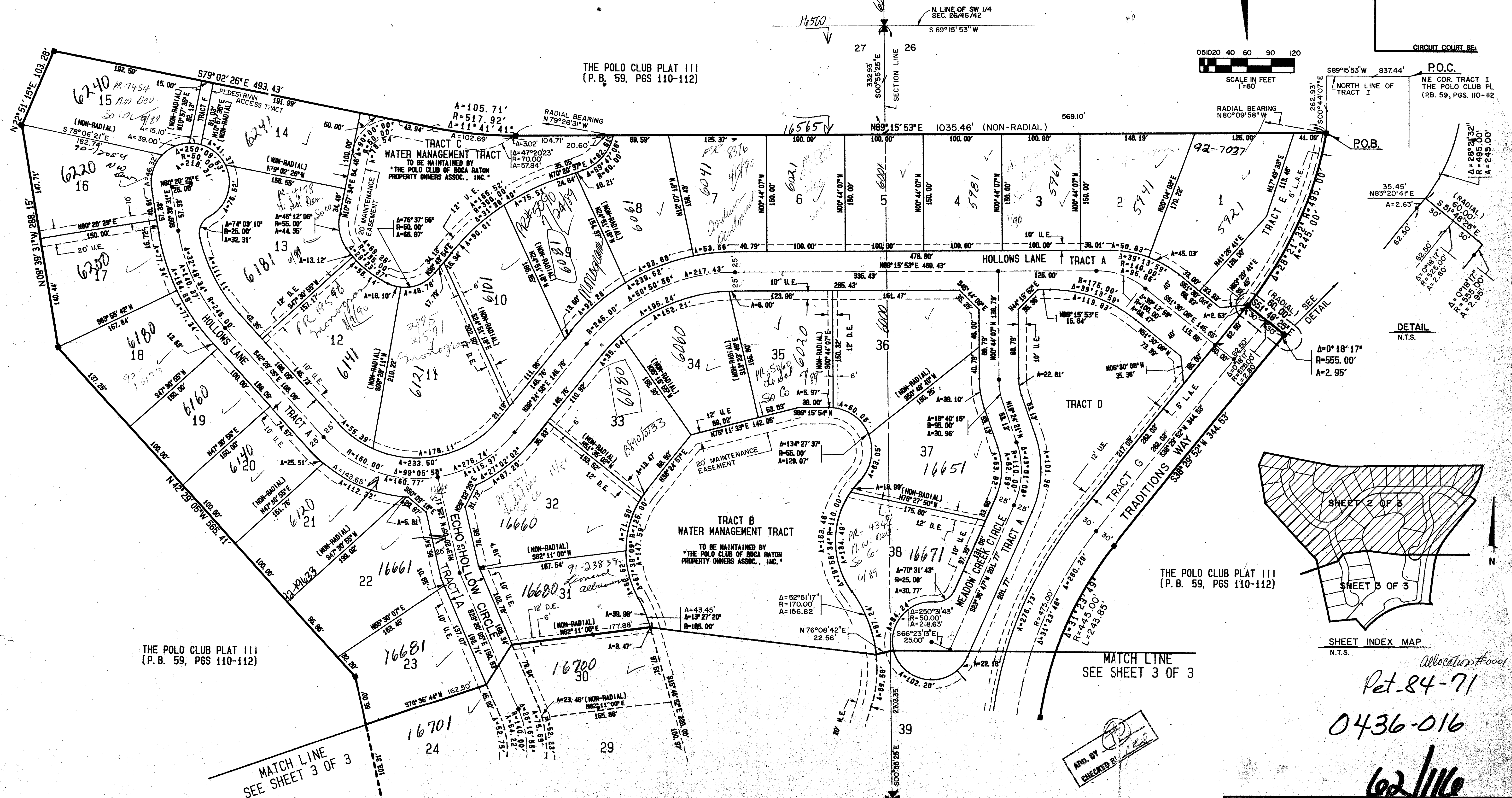
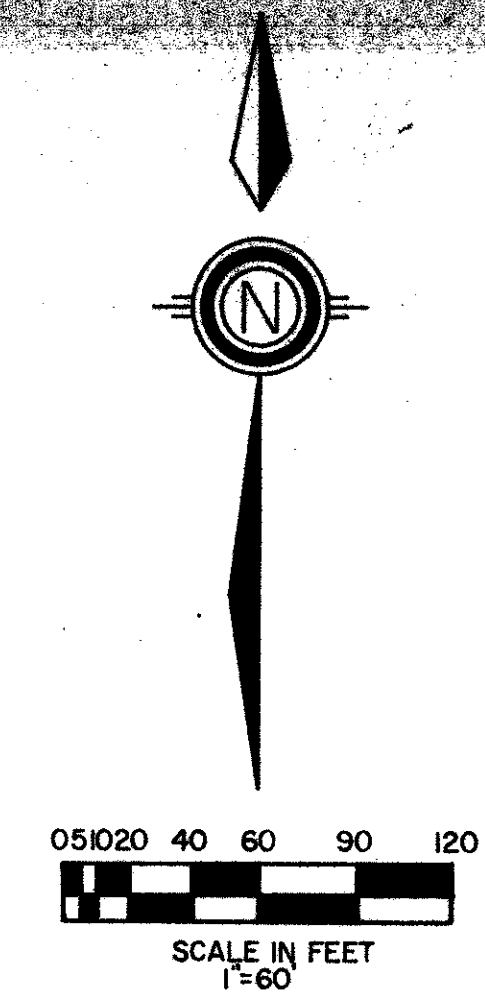
THE HOLLOWES

PART OF THE POLO CLUB P.U.D.
 BEING A REPLAT OF A PORTION OF TRACT I OF "THE POLO CLUB PLAT III" (P.B. 59 PGS. 110-112)
 SITUATE IN SECTIONS 26 AND 27, TOWNSHIP 46 SOUTH, RANGE 42 EAST
 PALM BEACH COUNTY, FLORIDA.

1989

SHEET 2 OF 3

STATE OF FLORIDA
 COUNTY OF PALM BEACH
 THIS PLAT WAS FILED FOR
 RECORD _____ DAY OF _____
 AD. 1989 AND DULY RECORDED
 IN PLAT BOOK _____ ON PAGE _____
 AND _____
 JOHN B. DUNKLE, CLERK
 BY: _____, D./



SUBDIVISION * The Hollowes
 PAGE 116
 BOOK 02 FLOOD MAP # 2204
 FLOOD ZONE B ZONING 84-71 R75
 QUAD # 37 ZIP CODE 33495
 P.U.D. NAME The Polo Club P.U.D.
 8672/146/42

ADD BY [Signature]
 CHECKED BY [Signature]

Allocation #0001
 Pet-84-71
 0436-016
 62/116

STANLEY/WANTMAN, INC.
 2000 LOMBARD STREET, WEST PALM BEACH, FL. 33407 (407) 842-7444

DRAWN	M.E.H.	DATE	OCT, 1988
CHECKED	R.B.P.	SCALE	1"=60'
DRAWING NO.	09745PL	THE HOLLOWES PART OF THE POLO CLUB, P.U.D.	